

THE MONITOR



The Newsletter of
the Newfound Lake
Region Association



MAY 2020

Cyanobacteria – An Evolving Threat

Across the state of New Hampshire, our community character and local economies are tied directly to the health of our lakes. This is especially true on Newfound Lake, renowned for the clarity of its waters. Newfound's clean waters depend on the healthy ecosystems in the hills and forests of the watershed. Forests and natural vegetation act as a natural water filter for the sediment, excess nutrients, and pollution that rain and melting snow would otherwise wash into surface waters. As we see more roofs, lawns, and roads in Newfound, as well as more frequent

intense rain storms, we see a decline in the water quality of the lake.

Cyanobacteria are an ancient species that can be found in healthy, biodiverse freshwater ecosystems around the world, including New Hampshire. At normal levels, they are not harmful, but when cyanobacteria form a "bloom," they can release harmful toxins that impact human and animal health.

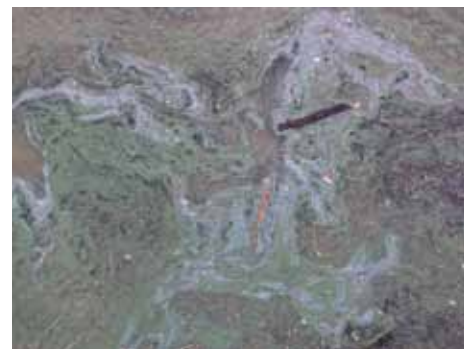
The science surrounding cyanobacteria is evolving. In some studies, the presence of cyanobacteria in Mascoma Lake, in Enfield, NH, has been linked to cases of

ALS, or Lou Gehrig's Disease. Dogs have died from swimming in and drinking lake water experiencing cyanobacteria blooms.

Cyanobacteria are different from the fluffy, green algae clouds, called filamentous green algae, we see in the lake during the summer months. While filamentous green algae can be a sign that an excessive amount of nutrients are ending up in the lake, they are not associated with toxins. In general, filamentous green algae are more of a nuisance than harmful.

As of now, we have not observed any

Continued on p. 8



Cyanobacteria blooms can vary in colors, size, and texture, but they often appear as an oily surface scum.

No cyanobacteria blooms have been observed in Newfound Lake, but it is important to keep a watchful eye out for any suspicious algae growth or surface scum.

PRESIDENT'S MESSAGE



Laura and Rob Moore. Rob has served as NLRA president since 2012.

Under the direction of Executive Director Rebecca Hanson, NLRA, the only organization whose full-time mission, 365 days a year is to protect the lake we all love, now has its biggest staff in its 49-year history. Now more than ever, as we all re-examine the priorities in our lives and in the world in which we live, we undoubtedly come out on the side of protecting the things we love – family, friends, our health, and our natural resources. I want to underscore the importance of protecting the health of Newfound Lake, where memories

are made and natural beauty stuns us every time we hike in the hills, swim, boat, or just relax. Our “cleanest lake in New Hampshire” needs our stewardship. Thank you to all our current and future members for continuing to carve out time and financial resources to conserve land, to combat invasives and contaminants, and to keep this gem of a lake pristine.

Rob Moore, NLRA President

FROM THE EXECUTIVE DIRECTOR

At the time of writing (April 15, 2020), I've been with NLRA for nearly six months. During that time, I've been enthusiastically welcomed into the Newfound community. Thank you! I've become acquainted with the trails and access points throughout the watershed, and I'm looking forward to getting out on the water when the weather is warmer. The lake and surrounding mountains are breathtakingly beautiful, but what really strikes me most about this special place is the community of people and businesses that are in love with Newfound Lake and the hills surrounding it.

And now, as our world is rapidly changing, this community is as dynamic and

committed as ever. What I know for certain is that this lake and watershed continue to need our help, and we need this strong, vibrant community to help us lead the charge in ensuring Newfound Lake is healthy and protected into the future. We're planning for our summer programs, making sure our water quality monitoring gear is ready for action, and building a vision for the future of NLRA. And, as always we are here as a resource to the Newfound community.

Rebecca Hanson, Executive Director



Rebecca Hanson joined the NLRA as Executive Director in October.



The Newfound Lake Region Association's mission is to protect Newfound Lake and its watershed. The Association – through education, programs, and collaboration – promotes conservation and preservation of the region's natural, social, and economic resources.

Officers: Rob Moore, *President*; Ken Weidman, *Treasurer*; Karen Boyd, *Secretary*
Trustees: Kathy Bird, Joe Boyer, Jim Fitts, Parker Griffin, Andrea LaMoreaux, Bob Martens, Steve McMahon, Ed McNierney, Les Mills, Rob Pinsonneault, Val Scarborough, Greg Wagner
Staff: Rebecca Hanson, *Executive Director*; Andrew Veilleux, *Program Manager*; Karen Bemis, *Development Director*; Audrey West, *Membership Manager*; Mario Capozzoli, *Relationship Strategy Coordinator*

Newfound Lake Region Association

10 N. Main St., Unit 1, Bristol, NH 03222 P: 603-744-8689, newfoundlake.org, info@newfoundlake.org

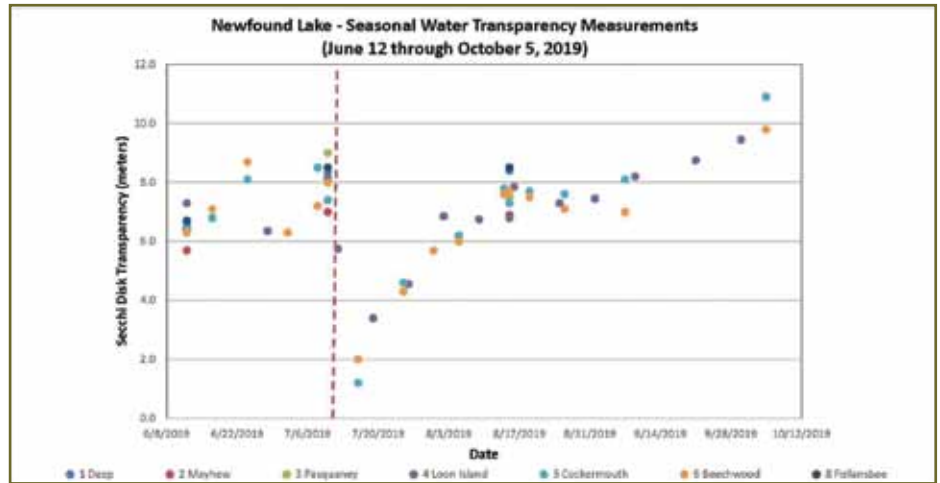
A Summary of Water Quality on Newfound

by Bob Craycraft, Lakes Program Coordinator, UNH Cooperative Extension

Volunteer water quality monitoring was initiated on Newfound Lake in 1996 to better assess the condition of Newfound Lake. In-lake water quality monitoring has been essential to track the water quality conditions during the ice-free period, largely mid-May through mid-September. The supplemental water quality sampling of stream inlets is also undertaken to document variations among streams and to screen for potential problem areas that contribute a disproportionate amount of contaminants.

Typical water quality measurements were selected to track the rate of a natural aging process by which a lake becomes more nutrient enriched over a geological time frame of thousands to tens of thousands of years. Typical water quality measurements include water transparency, chlorophyll content (a measure of microscopic plant abundance), total phosphorus (nutrient) concentrations, and dissolved oxygen concentrations. Limited phycocyanin (an indicator of cyanobacteria populations) data were also collected in 2019.

The Newfound Lake water quality continues to exhibit excellent conditions overall. Water quality measurements collected at locations north of Mayhew Island indicate high water quality; nutrient and microscopic plant abundance are low while the oxygen concentrations and seasonal average water transparency measurements remain high among sampling locations. Water quality conditions south of Mayhew Island are also high. However, shallower water transparency and lower oxygen concentrations at the most southerly sampling location indicate this section of the lake is further along on the natural aging pro-



On July 12, 2019, central New Hampshire experienced a huge rain storm. The sediment that washed into Newfound Lake impacted water quality for more than a month.

cess. Newfound Lake cyanobacteria levels remained low at all sampling sites when measured in 2019 and remained below nuisance levels.

Stream water quality measurements also indicated high water quality during the 2019 sampling season. However, historical stream sampling has documented short-term periods of poorer water quality. The

reduced water quality often accompanies intense storm events. Rainfall, and the associated overland runoff, tend to transport sediment and decaying matter into the streams that are measured as turbidity. Significantly elevated stream turbidity

Continued on p. 7



NLRA keeps a close eye on water quality conditions in Newfound Lake. Long-term water quality data shows a steady decline in water quality, and ever-more-frequent large storm events create short-term, but serious, water quality threats.



Inspiring Generations of Stewards: Looking Toward Another 50 Years of Protecting Newfound

In 2021, The Newfound Lake Region Association will be celebrating 50 years of protecting and conserving the lake and land of Newfound. Over the years we've accomplished so much. The Watershed Management Plan, implemented over the course of 11 years, has resulted in a positive impact across the watershed. This plan initiated numerous projects that have gone to great lengths to reduce harmful impacts to the quality of Newfound's water. In collaboration with the Newfound Land Conservation Partnership, we have been able to put over 25% of land in the watershed under permanent protection.

We've collected three decades of water quality data, enabling us to understand important nuances and water quality trends in the lake and its tributaries. We've engaged countless students, campers, families, and adults in environmental education through EcoTours, summer events, and other programs, furthering the sense of stewardship among the residents and visitors of Newfound.

Along with our community, conservation partners, and local and state governments, we will continue to educate and engage; conserve and protect; ensuring this treasured resource is maintained for generations to come.



Building on the foundation of nearly 50 years of lake and watershed conservation, the NLRA looks to the next generation of stewards to help us continue to protect this incredible place into the future. Photo credit: Wendy Landers

With these, and many other, accomplishments and successes from our first 50 years, we are looking to the next half a century. What will this lake, this watershed, and the NLRA look like in the future? Of course, we will continue our initiatives to protect the water quality of Newfound Lake, but in this changing world, we must also be adaptable. We are sure to face new threats as climate change progresses, and our work to safeguard this special place will become ever more important. The vision of NLRA is to be a leader in environmental science and education in the region and in the state, modeling environmental stewardship, sustainable lakefront living, and resiliency.

In recent months, we've sadly witnessed the passing of many of our founding members and supporters, and with them, the

responsibility of stewardship is passing to the next generation. The continued protection of this special place relies on a continued sense of wonder and appreciation of our surroundings, making our work with schools and young families ever more important.

Along with our community, conservation partners, and local and state governments, we will continue to educate and engage; conserve and protect; ensuring this treasured resource is maintained for generations to come. Through education, community engagement, and water quality protection, NLRA will work with our community, our conservation partners, and local and state government to ensure this treasured resource remains as pristine as we first found it.

NLRA Executive Director Joins Newfound Businesses at Bristol Elementary School

On March 2, Newfound area businesses congregated in the Bristol Elementary School gym. Through grant funding, Bristol Elementary School fifth graders interviewed local businesses to become familiar with the interview process, to build connections between the school and the business community, and to learn more about our local industries. As part of this project, fifth grader Nathaniel interviewed NLRA Executive Director Rebecca Hanson. Nathaniel summarized his interview with Rebecca below. Visit the Newfound school district's website to see summaries of all the fifth graders' interviews (sites.google.com/sau4.org/ncc/home).

"Today I had the pleasure of meeting with Rebecca from the Newfound Lake Region Association. The Newfound Lake Region Association is located in the Newfound Lake area. The Newfound Lake Region Association started in 1971. They strive to protect the water, watershed, and land around Newfound Lake.

"Rebecca graduated from UNH with a Bachelor of Science degree. She has had several training sessions, and she had to scuba dive to search for different species. Most of her work is with schools. She also offers boat tours.

"One of her biggest problems is storms that bring dirt into the lake. Thus, the organization has to prevent that from happening. Since global warming has become a significant problem, the lake has had to endure more storms. The organization is funded by donations and from the state. Newfound Lake Region Association works with the TTCC and 49 other area businesses. They offer a summer camp for a week before school begins. Give them a call!"

Audrey West Joins NLRA Team

In October, we welcomed Alexandria resident Audrey West to fill the post of Membership Manager, a new position at NLRA. Audrey grew up in Alaska, a beginning that fostered a great apprecia-



Audrey West joined NLRA in October as the new Membership Manager.

tion for wild places. She moved to the East Coast and attended New England College, receiving a BA in Business Administration, and has lived in Alexandria since 2015. Audrey is dedicated to the

well-being of her Newfound community and the protection of its unique resources. Along with her husband David and their son Sterling, Audrey enjoys kayaking, biking, skiing, and attending the many festive local events.

Audrey has been busy in her first six months with NLRA, and you have likely already seen the impact. Our email newsletter, now called the Newfound Connection, received a refreshing update under Audrey's management. Audrey produces the Newfound Connection every other week, keeping our members and friends up to speed on NLRA activities and programs as well as watershed-wide issues and events. You can subscribe to the Newfound Connection at newfoundlake.org/newsletter-sign-up.

Audrey also manages our membership records, ensuring we are connecting with the Newfound community. You can reach Audrey by phone or email at 603-744-8689, audrey@newfoundlake.org.

New NLRA Trustee

In November, NLRA welcomed Rob Pinsonneault to the Board of Trustees. Newfound Lake has been a central part of Rob's fam-



Rob Pinsonneault

ily for four generations and counting. Since the early 1960s, his family has come to this lake to recreate on, around, and in the lake's clear waters. Rob's emotional attachment to Newfound has always fueled a desire to explore and protect this place, but it was not until a fortuitous collaboration with Plymouth State University that his scientific interest in these waters gained purpose and momentum. Rob now leverages his expertise in molecular ecology to explore the natural history of the lake and to develop new ways of understanding Newfound that will have broad applications, particularly with respect to how New England is responding to changes in our climate.

NLRA's Annual MegaRaffle

The NLRA is grateful to our wonderful business members who support our raffle by donating great prizes. These small, local businesses understand the value of a healthy watershed and the importance of protecting it. For the past 11 years, they have given paddleboards, jewelry, artwork, gift certificates to vacation lodging and restaurants, boat passes and so much more!

But now, they need our support. The NLRA has made the decision to cancel the raffle this year. We encourage you to support our local businesses by shopping and dining locally as soon as it's possible. This helps to keep money in the community and creates a vibrant and healthy economy. Newfound Lake and its community are very special to all of us. Let's all pitch in to help our businesses during this time of uncertainty.



Due to the global pandemic, the NLRA has cancelled the MegaRaffle this year. Thank you to our local businesses for your support. It's time to support YOU now.

Supporting and Strengthening NLRA's Programs and Partnerships

At the 2019 NLRA Annual Meeting, long-time members Steve and Cheryl Jonas announced the establishment of The Endowment Fund for Educational Programs and Partnerships in Honor of Boyd Smith, celebrating the great work of the NLRA Executive Director from 2006-2019. Steve and Cheryl opened the fund with an initial gift of \$25,000, while also generously agreeing to match the first \$75,000 of donations the fund received.

The outpouring of support from members, trustees, and NLRA staff has been equally as generous. Over one hundred donations have been made, bringing the value of the endowment to \$145,000. This is an honor both for NLRA and for Boyd Smith.

This collective effort led by the Jonas family will expand NLRA's ability to deliver environmental education opportunities and community programs to Newfound. To paint a picture right here of what it will actually look like: school groups will get

involved in place-based environmental education, groups of all ages will learn about the natural world of Newfound. There will be more access for everyone to everything we love about the lake and its watershed, inspiring more good stewardship. Look for exciting new programs and events coming soon.

This fundraising effort has already been a phenomenal success, and there's still time to participate! Make a gift to the Endowment Fund for Educational Programs and Partnerships today to promote an informed, engaged Newfound community. Donations can be made online at newfoundlake.org/membership or contact Karen Bemis, NLRA Development Director, 603-744-8689, karen@newfoundlake.org.

Thank you, Steve and Cheryl Jonas, for your momentous contribution and for motivating so many with your passion for Newfound and your commitment to NLRA.

Through overwhelming generosity from the NLRA community, the Endowment Fund for Educational Programs and Partnerships in Honor of Boyd Smith provides opportunity for new programs and for sharing this wonderful place with future generations.



AROUND THE LAKE

Legacy Giving – The Clear Water Society

“The goal isn’t to live forever. The goal is to create something that will.” — Chuck Palahniuk, novelist

You’ve been donating for several years, showing your commitment to protect Newfound Lake. You know the importance of safeguarding the lake from invasive species and maintaining healthy forests to filter our water. You cherish the time spent with friends and family at the Lake. You don’t want anything to change.

Those common values are expressed by so many Newfounders. You become passionate when talking about the Lake. You

can’t wait until you return to the Lake, exhale, and feel your blood pressure begin to lower. The Lake has that calming effect on all of us.

Your annual support is essential for the work we do today, but you can also have a lasting impact on Newfound by ensuring our work continues tomorrow. Join the Clear Water Society by including NLRA in your estate planning and create a legacy that lasts longer than a lifetime.

Speak with your family and financial planner, and please let us know if you have included NLRA in your estate planning. We thank you for your commitment and leadership.

To alert NLRA of your planned gift or for questions regarding planned giving please contact Karen Bemis, NLRA Development Director at 603-744-8689 or karen@newfoundlake.org.

Newfound Clear Water Society

Richard and Linda Beyer

Margaret Depopolo

Keith and Angeline Harger

Christopher Keppelman and James Mulroy

T. (Bud) Holmes and Norma Jean (Jinga) Moore

Leslie Sanderson

Andrew Veilleux

*Preserve, Conserve, and Protect Newfound Lake
for today and TOMORROW!*

*Consider becoming part of the Clear Water Society
and protecting Newfound Lake forever.*



WATER QUALITY cont'd from p. 3

readings have generally been associated with corresponding increases in phosphorus. The elevated phosphorus concentrations can drive algal growth (e.g. greener conditions), while the elevated turbidity levels can reduce light penetration and thus reduce water transparency as the streams discharge into Newfound Lake.

An intense storm event passed through the Newfound Lake region on July 12, 2012, and dumped nearly 3.5 inches of

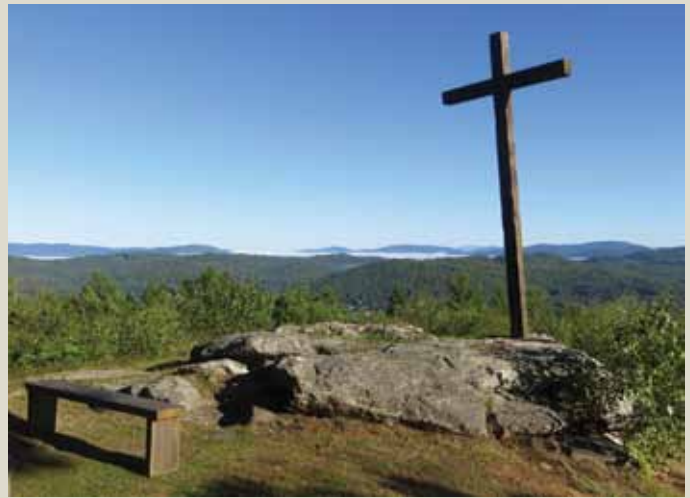
rainfall in Plymouth while reports of localized rainfall totals in excess of 4 inches were reported for Hebron and Grafton. Interestingly, Newfound Lake water transparency measurements, collected in the northerly portion of the lake, decreased by over 16 feet after the storm and then gradually recovered over the next two months. Intense storm events, such as the July 12 storm as well as Tropical Storm Irene (August 2011), are a reminder that while the Newfound

water quality remains high, Newfound Lake remains susceptible to short-term water quality problems. Longer-term water transparency data, collected in Pasquaney Bay between 1986 and 2019, exhibit a trend of gradually decreasing water transparency over that span. A corresponding increasing trend of microscopic plant growth is evident in Pasquaney Bay and further indicates that while the Newfound Lake water quality is high, water quality threats remain.

Remembering Departed Supporters

It's always difficult to say goodbye. These great folks have given their time, talent, opinions, and support to the NLRA, and we will forever be grateful for it. They have challenged us, taught us, and inspired us to do our personal best. We will miss them, and will continue our efforts with their guidance. It truly was a pleasure to know them.

Lee Alexander	Craig Knowles
Lois Bannan	Norma Jean Moore
Catherine Barrett	Neal Peirce
Donald Caldwell	Kathy Radimer
Barbara DeMers	Helen Robinson
John Dineen	Ann Smith
Dennis Dodge	Daniel Smith
Ray Dunn	Thayer Fremont-Smith
Elizabeth Emerson	Jack Spaeth
Frank Goodick	John Stokoe
Keith Harger	Betsy Twombly
Bettina Jenney	Russ Walberg
Charles Karner	Sterling Weaver



Inspiration Point in Bristol is a quiet place to reflect and remember those we've lost.

CYANOBACTERIA cont'd from p. 1

cyanobacteria blooms in Newfound Lake. The great depth of the lake helps keep the temperature low and makes it harder for cyanobacteria to get the sunlight and nutrients it needs to grow. Keeping our water clean by reducing runoff from our roads, roofs and lawns, also plays a big role in reducing our likelihood of experiencing a bloom.

Guided by the 2009 Newfound Watershed Plan, the NLRA has made great strides to reduce nutrient and sediment input to the lake to protect the high quality of the water. We have worked with watershed towns to reduce impact from roads, culverts, and public property. We have also worked with private property owners around the lake to reduce their impact by installing rain gardens and other landscaping to catch and filter nutrients from stormwater runoff. Through our Youth Conservation Corps, we provide property assessment, planning, and installation of landscaping that benefits

the lake, while also engaging local youth in meaningful employment. This strong partnership between NLRA, municipalities, and property owners is an important step to protecting Newfound's water quality and lowering our risk of cyanobacteria blooms.

Regular water quality monitoring through the Lakes Lay Monitoring Program (LLMP) tracks chlorophyll levels in the lake. Since cyanobacteria are photosynthetic organisms, monitoring chlorophyll levels serves as an indicator of cyanobacteria levels. In 2019, LLMP also tested for phycocyanin, another indicator of cyanobacteria levels, and found no evidence of cyanobacteria.

Beyond prevention and water quality monitoring, we also need to keep a diligent eye out for potential cyanobacteria blooms. Our water quality monitors and weed watcher volunteers will be trained to spot potential cyanobacteria blooms. (Learn more about these programs and

get involved here: newfoundlake.org/employment-volunteers/). However, anyone who enjoys time on Newfound can keep an eye out for cyanobacteria. Look for an oily, scummy bloom on the surface of the lake, keeping in mind that filamentous green algae (fluffy green clouds of algae below the water's surface) and pollen can often be mistaken for cyanobacteria. Blooms typically occur in mid to late summer when water temperatures are at their warmest.

If you do suspect a bloom, take a photo and carefully note the location. Blooms can disappear quickly, so documentation is important. There are a number of resources available to learn more. Start with cyanos.org, where you can see photos of cyanobacteria, learn more about the work being done around the state and region, and download the BloomWatch app.

And, of course, reach out to NLRA if you have any questions.

Watershed Stewards – AmeriCorps Service Volunteers

Last year was our first year as part of the Lakes Region Conservation Corps, a regional AmeriCorps program, and we accomplished more than we could have imagined. Our AmeriCorps team educated dozens of people at Grey Rocks and local events, helped with trail work around Newfound, and boosted the success of each of our programs. AmeriCorps also collaborated with NH Fish & Game to complete a massive watershed culvert study, with the Town of Hebron to build trail bridges in the Town Forest, and with the Town of Bristol to install plantings at the Cummings Beach swale.



Maintenance of stormwater landscape features is very important. In partnership with the town of Bristol and community volunteers, our Youth Conservation Corps has worked to maintain the Cummings Beach stormwater swale for the last three years.

Stormwater Management: Working with Homeowners and Local Youth

Our Youth Conservation Corps install steps and other landscaping features in places that have a high risk of soil erosion, such as pathways, driveways, driplines from roofs, and sloped lawns. The group took on six new stormwater

mitigation projects that will capture 64 pounds of sediment every year that would otherwise enter the lake. Visit our Grey Rocks property for a preview of the potential projects that could be installed on your property!

Invasive Species Protection

Lake Hosts: Newfound Lake Hosts, the frontline of defense against the introduction of invasive species, performed almost 2,500 inspections of boats and trailers at both Wellington State Park and the Grey Rocks Conservation Area in 2019.

Weed Watchers: In 2019 Weed Watchers monitored the shorelines of the lake for invasive species, concentrating on areas downwind of boat launches and river inlets.



Our Weed Watchers are looking for rapid growth or changes in aquatic plants, but they see a lot of wildlife along the way.

EcoTours

EcoTours had another great year in 2019, with over 200 guests on our regular tours and another 60 guests on private tours. A review from an August passenger, Paul W., says “A great, informed narration of the history, geology, development of Newfound Lake. My 9-year-old granddaughter loved the science experiments.”



EcoTours run throughout the week during the summer months aboard Madelaine.

NLRA 2019 ANNUAL REPORT

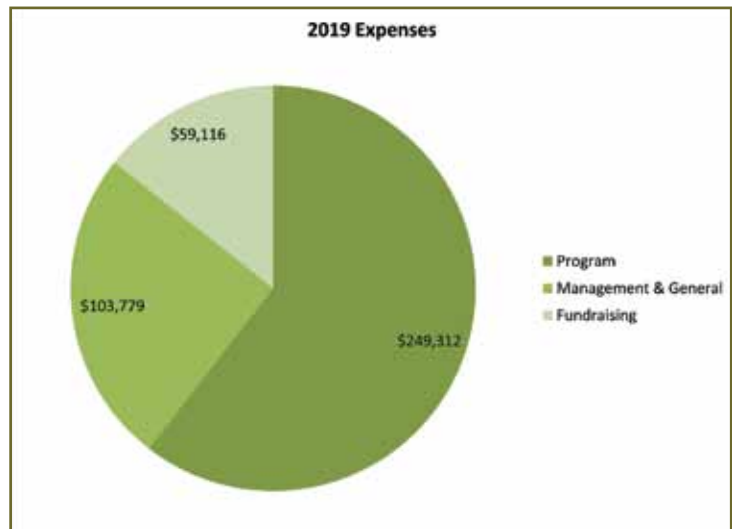
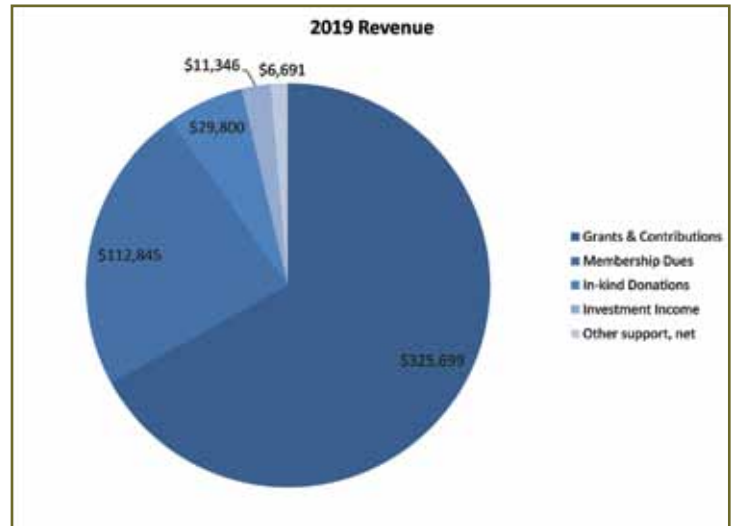
Treasurer's Report for the Year Ended September 30, 2019

by Ken Weidman, NLRA Treasurer

This has been another remarkable year for your association. Our management transition has been completed successfully, and Rebecca Hanson is our new Executive Director. We engaged Melanson Heath to complete the first full audit of our books. Melanson Heath completed the audit and issued an unqualified opinion. As has been our procedure, without using any available endowment funds, we recorded another surplus at year end. Probably the most significant events in this year's financial life were the launch of the Endowment for Programs and Partnerships in Honor of Boyd Smith. The Jonas's commitment began with a \$25,000 donation and an agreement for a 100% match of all donations up to \$75,000. As of our year end (September 30, 2019) the fund totaled \$63,000 and as of this writing, the fund balance stands at \$145,000. Another challenge match from a generous donor, to encourage an increase in annual giving resulted in overall increases in membership and annual fund contributions. The match will provide over \$15,000 in additional funds to the association.

Highlights:

- Annual Fund: Donations of \$193,000 represented 96.5% of the annual fund budget.
- Watershed Master Plan IV: Successfully completed our fourth Watershed Master Plan through a grant with the New Hampshire Department of Environmental Services.
- Membership: Spurred on by the membership challenge match from a generous donor, membership receipts exceeded our budget by 7%.
- MegaRaffle: We completed our 11th annual raffle with ticket sales of \$9,500 and over \$11,000 in prizes donated by local merchants.
- Annual Revenues: Including the contributions to the Endowment for Programs and Partnerships in Honor of Boyd Smith, \$445,000 for 2019 exceeded our budget by 9%.
- Investment Income: Annual investment income is added to the investment portfolio. In 2019 investment income totaled \$11,000.
- Personnel Costs: All-in personnel costs of \$207,000 came in under our budget by 10%. 56% of all personnel costs are allocated to program costs.
- Expense Allocation: Annual expenses of \$412,000 were on budget and used to cover program costs of 60%, G&A expenses of 25% and Fundraising of 14%.



- Balance Sheet: Our balance sheet remains very strong. Repeated annual operating surpluses, generous annual fund donations, increases in memberships and investment earnings have built our net assets (equity) to almost \$1.2 million.
- Your association is in great shape. This results from dedicated NLRA members, a strong board of trustees, strong and competent management and staff, great programs, prudent financial management, and an excellent financial condition all of which contributes to fulfilling the NLRA mission.

NLRA 2019 ANNUAL REPORT



THANK YOU TO OUR SUPPORTERS

We are deeply grateful for the Newfound community's wellspring of support; often people are giving generously multiple times throughout the year. The listing below includes all NLRA donations received in 2019, including contributions to our spring membership drive, the MegaRaffle, the Endowment Fund for Programs and Partnerships in Honor of Boyd Smith, the Annual Fund, in-kind donations, and gifts made in memoriam. We thank our supporters for their commitment to Newfound.

\$10,000 and greater

The Charles Foundation Inc.*
Steve and Cheryl Jonas*
Andy and Linda McLane*
RODE
Jim and Sally Vanicek*

\$5,000-\$9,999

Eric and Rebecca Herr
Christopher Keppelman and Jim Mulroy*
Selina Rossiter and Alexander Colhoun
TD Bank

\$2,500-\$4,999

John and Sandy Beard*
Mark and Dana Belland
Russell and Nancy Blair*
Helen Robinson*
Kelly Dunn*
James Fitts
Parker Griffin and Camille Bharucha
Cynthia and John Hilson
Thomas Jones and Betty Mobbs
North East Genealogical Research
John and Valerie Scarborough*
Shelter Hill Foundation*
Jim and Gillian Van Schaick
West Shore Marine, Greg and
Gina Wagner

\$1,000-\$2,499

Michael Asay*
William Bayers
Richard and Linda Beyer*
Jerry and Eleanor Bowe
Anne Bryan
Chet and Mary Butcher*

Camp Onaway Trust*
Camp Pasquaney*
Lawrence Caperton
Dave and Roz Carlson*
Deborah and Bruce Cummings
Daniel P Hagerman Foundation
Herb and Rosemary D'Arcy*
Jane Kendall and David Dietz*
Donald and Martha Dolben*
Susan Emerson*
Helen and Priscilla Gemmill
Frank and Phoebe Griswold*
Adele Grunberg and Kenneth Nellis
Leonard Jolles
Roger and Carol Lafontaine*
Daniel and Victoria Lavecchia*
William and Mary Lensen
Lori and Jim Lerner
Robert and Martha Marshall
Robert and Susan Martens*
Martin W. Richard Charitable
Foundation
Cinda McKinney*
Tucker and Natalya McLane*
Susan and Douglas McLane*
Stephen McMahon and Grace Freije
Ed and Kate McNierney*
Robinson and Laura Moore*
Erick and Tracey Piper*
Cathy and Keith Pippard
Peter and Ellen Rawlings
Steven and Pauline Re
Thomas and Sharon Rohlfis
Bob and Natalie Rooke*
Michael and Arlene Sobol*
Sullivan Creative
David Toebes and Betty Rafferty

Newfound Shore to Shore Society

Shore to Shore Society members, referenced with an asterisk (*), are a select group of loyal donors who have made NLRA a priority in their charitable giving for 15 years or more. We thank these members for their exemplary commitment and dedication, which have helped to keep Newfound Lake clear and clean!

Town of Alexandria
Town of Bridgewater
Town of Bristol
Town of Groton
Town of Hebron
Mary Ann and Nicholas Vailas
Ken Weidman*
Diana Wister

\$500-\$999

Anonymous
John Arnold
Barney Point Trust*
Todd and Andrea Bates
William and Jean Beebe
John and Carrie Bennett
George and Nancy Bolln*
Joseph Boucher
Arthur and Diana Burdette
Kennett Burnes
Camp Berea

George Carr*
McLane and Shiverick Families
Central Rivers Power
Robert and Susan Davies*
Elizabeth Emerson*
Bruce and Carolyn Field*
Bob and Lynn Flayhart
James and Susan Geraghty*
Ann Giles*
Golden Leaf Landscapes
Don and Sylvia Hampton
David and Anne Hardy
Walter and June Hatfield
James and Catherine Hunt*
John M Bryan Family Fund
Pamela and Robert Johnson
Jane Kent*
David Lakari
Chris and Tracy Laux

Continued next page

NOTES: Thank you to all of our supporters for their generosity. We apologize for any errors or unintentional omissions.

Please contact Audrey West for any corrections: 603-744-8689, audrey@newfoundlake.org.

NLRA 2019 ANNUAL REPORT

Continued from previous page

David Lemoine and Mary Cotter-Lemoine
Hope Lomas
Joseph Mancini
Peter and Cindy Matthes
Meadow Wind
Frank Mihovan and Patricia Crowley
Kevin and Alice Mullen
Network For Good
Newfound Lake Inn
Elaine and Frances Pagliaro *
Marilyn Passanisi and Mary Worthen *
Red Fox Village Property Owners, Inc.
Linda and Thomas Rickenbach
John Rohlfs and Madelyn Zera
Cynthia Rooke
Sandybeach of Newfound
David Schamp and Mary Beth Muscara
Sally Scott and James Potash
Paul and Jamyn Sheff
Steve and Carolyn Shulman
Sleepy Hollow Village Association
Steven and Kelley Small
Emily K. Smith *
Boyd Smith and Annette Zamarchi
Caroline Southall *
Max and Helga Stamp *
Stone Gate Acres Association
Julie and Phil Taub
Timberloch Lodge
Jean Weaver *
Raymond and Meredith Weigel *
Robert Williams III
Charles Wright and Lynn Hughes *

\$250-\$499

3 Lakes Landscaping
Elroy and Marie Alderink
AMC Cardigan Lodge
Amy-Jo Cottages
Aurental Consulting & Technology
Services
Patricia Bannan *
John and Katherine Barry
Joan and Christopher Basile
Kent and Karen Bicknell
Jim and Constance Bouchard
Karen Boyd *
William and Nancy Brady
David and Mavis Brittelli
Vincent Broderick
David and Ann Bulk *
Camelot Acres Residents Association
Donald and Maureen Canniff *
Paul and Patricia Clemente
Jan and Ron Collins *
Suzanne and David Cooper
Margaret Depopolo *
Darryl and Alicia DeVivo
Glenn Dorr *
Geoffrey and Maureen Emerson

Bill and Linnea Everett *
Richard and Mauria Falcone
Rita Finn *
The Fish Family Foundation
Yves and Judith Guerard *
George and Audrey Hagerman *
Phil Harvey
Hebron Area Womens Group
Charles Hicks
Barbara Karner *
Thomas and Lynn Katon
Ellen Ketterson
Terry Knowles
Jonathan Ladd
Dr. Alison and Mitchell Levine
Nicolas and Page McCoy
Pamela and John McPherson
David and Diana Miller
Joanne Miller-Levesque and Amy Miller
Linda and Jim Morse *
Joe and Susan Murphy
Matthew and Joanne Naimie *
Mary Nell Allen
Bill and Connie Nobles *
Fred and Dee Dee Nold *
North Woods Gifts & Gallery
Bill and Donna Olson
Seton Lindsay O'Reilly
Jay Orlander and Jacqueline Mitus
Craig Palmer
Barbara Peirce *
Picked and Polished
Tim and Liz-Anne Platt *
Jane and Michael Quinn *
Bob and Leigh Radimer
Caroline and Christopher Reinke
Rhino Bike Works
Robert and Joyce Romeri
William and Paula Rooks *
Ronald and Deborah Russ
David Ryder *
Tony Salerno
Leslie Sanderson and Robert Ziegel
Elizabeth Seeler
David and Jane Shapiro *
Reginald and Lynn Shiverick *
Michael and Christine Shusterman
Stephen and Sandra Shusterman *
William and Christine Smaldone
Anthony and Eleanor Spinazzola
Lindsay Thompson and Elizabeth
Serlemitsos
Vincent Vaccarello and Jacqueline
Parmentier *
Susan Watts
Stephen and Barbara Weglarz *
Whittemore Shores Condominium
Association
Robert Wisner
Susan Wood

\$100-\$249

Brooke Alexander and Robert L. Brown
Judith Anderson
Stephen and Leslie Aprea
Robert and Gail Arcieri
Gale Matheson Aronson
Armand and Janice Auger *
Julie and David August
Lynne Avery
Dick and Diane Baker
Bradley Family Newfound Trust
Michael and Paula Bartosiak
Basic Ingredients
Ken and Ellie Batchelder *
David and Elizabeth Beach
Derek and Marique Beard
Karen and Paul Bemis
Gordon and Christa Bennett *
Louis and Camille Bertolami
Lucius Biglow
Rick and Carole Binder
Kathy and Jeff Bird
Judith and Thomas Bisett, MD
John and Barbara Bishop
George and Marilyn Blaisdell *
Blue Moon Motel
Barbara and Harold Bosco
Anne and Arthur Bosley
Joseph and Dawn Boyer
Bridgewater Hills Association
Bridgewater Inn
Bristol Diner
Bari Brodsky
Claire and Eric Brosius
Peter Brown *
Merrill Bryant *
William and Annette Bryce
Judy and Todd Buck *
Kathleen Burner
Michael and Pauline Burton
Joseph Cade
Heather Huckins and Craig Cadieux
Camp Greenwood Estates
Mario Capozzoli
Cardigan Mountain Massage, LLC
Cardigan Mountain Orchard
David and Charles Carr *
Paul Catanzaro and Marygrace
O'Horo-Catanzaro
Wes and Sue Chadwick
Joseph and Donna Chisholm
Cielito's Mexican Restaurant
Paul and Carolyn Clark *
Old Clubhouse Condominiums *
Mary Cody
Wendy and Eric Cohen
Burt and Barbara Cohen *
Robert Colella
Judith and Danny Coll
Jon Comola
John and Kathleen Connolly *
Walt and Janice Connor
Peter and Carolyn Cordeiro

Scott and Debora Cote
Eileen Cotter
Ray and Karen Courchaine
Richard and Joyce Cowern *
Jim and Jan Crawford
Victor and Sheila Currier *
Alison and Robert Davidson
Ginny Davis
Todd and Patricia Davis
Joseph and Helen Decosta
Dr. Laurence, Susan, Chris,
Marc and Andrew Demers
William DeMers
Robert Denious
Robert and Patricia DeNoble *
Alan and Denice DeStefano
Kelly and Greg DeVivo
Nancy and Peter DeVivo
Nancy Dineen *
Peter Doerner
Mr. and Mrs. Allen J. Dogger
Rev. Ralph and Judith Donohue
Jeff and Jacqueline Downing
Gerard and Pamela Drypolcher *
Paul Dustin
Ingeborg and Nils Eddy *
Erin and Thomas Edwards
Anne Elizon Brown
Emma's Perennials
EW Tax and Valuation Group LLP
Caroline and Peter Exford *
Experience Newfound
Paul Falzarano and Patricia Church
Joseph and Rhoda Fantasia
Victor and Kathleen Field *
Regena Fitchett *
James and Francine Fletcher
William Flynn *
Leslie and William Frazier *
Fred's Auto Trends
Thayer and Anne Fremont-Smith *
Gary Frost and Dotti Balon-Frost
Robert and Sarah Gabler *
James and Ruth Gaffey
Paul Gagnon and Yvonne La-Garde
Ray Gagnon
Enrico and Patricia Ghelli
Gilly's Restaurant
Gina's Place
Lawrence and Deborah Goodman
Lawrence and Kay Graff *
Ted and Mary Haines *
Charles Hall
Hannaford Supermarkets
Virginia Hantz *
Wayne and Barbara Harding
Eileen and Joseph Harris
Debra Hart and Brian Lewis
P.T. and Jane Hart
Eric Wiswall
The Henry Whipple House
Steven and Kristine Hering
Robert Hillman and James Mitchell

NLRA 2019 ANNUAL REPORT

Peter Holman
The Homestead
Matthew and Melissa Hughes
Charles Hulten and Nancy Humphrey *
Nicholas Ilyadis
Imagine
Bettina Jenney
Mary and Kelly Johnston
Kathleen's Cottage
James and Phyllis Keenan
Thomas and Nathalie Kehoe *
Scott and Melanie Kelley
Ann Kirby
Faith Knowles and Peter Thompson
Linda and Jim Kohn
Fred and Barbara Kohout
Tom and Dr. Kimberly J. Kuehl-Lamb
Frederic and Trudy Lambie
Andrea, Phil and Iris Lamoreaux
Drew and Carol Landry
Roger and Jennifer Larochelle
Susan Latronico
Fred Lawrence
Rich and Ellen Lawrence
John and Sue Leiendecker
Mark and Maribeth Lightowler
Edward and Karen Lindholm
Robert and Priscilla Liprot *
Richard Lobban and Carolyn
Fluehr-Lobban
William and Patricia Lochhead *
Joel and Gretchen Long
Judith Lyttle
Sarah MacDougall and Bill Roberts
Lester and Dolores Mack *
Ronald and Charlene Mallette
Marleywood
Suzanne and Richard Martin
Christopher Martino
Keith Mayou and Melissa DePalma
Tom and Fran McKinnon
Lori-Ann Melia
Kenneth and Kathleen Milender
The Mill Fudge Factory
MJ Harrington Jewelers
Norma Jean Moore *
Tom and Mary Moore
Grace Moore Lee
Wayne and Marty Morrill
Robert and Suzanne Moskal
Margaret Muir and Andrew Ketterson
Donald and Laurie Munro
Robert and Deborah Murray
William and Margaret Naumes *
Newfound Country Store
Newfound Maintenance
NH Audubon
Barbara Nicholson *
Barbara Nieman
Raymond and Helen Noel
Joe and Sinikka Nogelo
Miles and Gerry Nogelo *
Michael and Carolynne O'Brien

Christopher and Mary Alice O'Connor
Fernando Oliveira and Susan Whittemore
Ralph and Holly Oliver
Neil and Elinor Olken *
Ron and Fran Olson *
Justin Ostro
James Owen and Laura Rudolph-Owen
Palmer Ruoff Family *
Laura and Mark Parisi
Donald and Elaine Paula
Michael and Beth Paysnick
Andrea Peirce and Fred Pelzman
Peter Brown Et Sons Furniture *
Ann Peterson *
Kirk and Sharon Phelps
Glenn and Susan Pina
Barbara Pinsonneault
Peter Pirnie and Diane Arsenault
Dave and Pam Plankey
Bill and Sharon Popeo
Cheryl Porter
Matt and Elissa Rader
Susan and Neil Ramquist
Dave and Catherine Bannan Redman
Renaissance Florals
Lawrence and Karen Reynolds
Celine and Robert Richer
Riverview Artisans
Blake Robbins
Carlene and David Rose
Bill and Susan Rowean
Judith and William Rummier
John Sackton and Marcia Butman
Jim and Jan Salvucci *
Ileana Saros and Gerald Lauther *
Wilda and Alfred Schommer
Lindsay Scott
Christine Segalas
Shackett's Brewing Co.
Shackett's Landing Assoc. *
Shackett's Supermarket
Al and Doreen Shameklis
Elena and Kenneth Sheldon
Jean and Nicholas Sideris
Peter and Carol Silbermann
Simple By Nature Landscaping
Charlotte and Richard Skiffington
Norman and Carol Small
Suzanne Smith *
Brian Smith and Lois Vandekopple-Smith
Linda and Jeff Sobel
Nancy Springer *
Spruce Woodland Association
Squam Lakes Science Center
Martha Steele
Philip Stephenson
Gregg and Lisa Stone *
John and Linda Sugden *
Ed and Cathy Taglieri
Richard Tapply
Thai Smile
Stuart and Jane Anne Thompson
John Thompson

Davis and Patricia Thurber *
Stephen and Jackie Tippett *
James and Rosemary Tuite
William and Janet Tumber *
Twin Designs
Phillip Twombly *
Edward Van Dorn and Sally Batton
Barbara Vanburen *
Village Pizza
Henry and Linda Vollmer
Carolyn Waite and Tom Gillery *
Gerald and Linda Walsh *
Waterville Valley Adventure Center
Curtis and Georgianna Way *
Patricia and John Wells *
James and Lin Westberg
Westview Estates Association
Jeffrey and Jane White
White Mountain Country Club
Steve and Nancy Whitman *
Kathy and Dan Willey
Paul Wilson
Raymond Wilson *
Marc and Solveig Wolstenholme
Susan Yardley
Willi and Christa Zankel *

\$50-\$99

Lee Alexander *
Rick and Cheryl Alpers
Barbara Alterowitz
Kyle Aprea
Jacqueline Ayotte-Eichman and
Fred Eichman
Walter Bacigalupo
Lois Bannan
Andrea Barhydt
John and Pat Barker
Michael Bartlett
Bayview Condominium Association
Everett and Kathy-Lyn Begor
Zita Bello
Kathryn Bernache *
David and Rebecca Bliss *
Dennis and Susan Bogdan
Jeannine and James Bowen III
James and Lucinda Brann
Richard and Deborah Brann
Jane Brown Sparks
Virginia Burke
Philip and June Burrows *
Anthony and Sharon Canzano
Austin and Barbara Carpenter *
Theodore and Kathleen Catineau
Blake and Annette Cerullo
Ann and Charles Chivakosn
Richard and Maxine Clough
Peter and Elizabeth Cole
Nancy and John Conner
Richard and Martha Cunningham
Catherine Davis and Bill Weidman
Gerald and Kathleen Davis
Donna and Rick Delancey *
Libby and Leon Desfosses
Lynne and Richard DeVivo
Gary and Brenda Diederich
Christina and Gary Divelbiss *
Judy Dodge
Warren and Nancy Doerner
Bruce and Nancy Dorner
Peggy Dotter
Nancy and Bill Dowey
Brad Esthus
Richard and Susan Evans
Isabelle Farrell
Alan Farwell
Gary and Sally Filteau
Valerie and John Fieger
Glenn and Mary Ford
Joyce Fraitzl *
Ted and Coleen French
Paul and Linda Gagne
Sharrol and Michael Gianatassio
Bette Gibson
Mark and Naomi Goldman
Barbara and Frank Goodick
Edward and Gayle Gordon *
Peter and Sachiko Gordon
Kristen Gould
Donna and John Graves
Kevin and Judy Gray
Sylvia Green *
William and Jacqueline Habig
William and Patricia Hamlett *
Mary Hardiman
Matthew and Meghan Hart
Monica Hart *
Paul and Mary Hazelton
Arthur and Dorothy Hoag
Ann and Bill Houpt
Nancy Howard and Laura Jovino *
Richard and Gail Howell
Donna and Glenn Huot
Richard and Deborah James
Anthony and Deborah Jarosz
Mark Jesionowski
Deniz and Scott Johnson
Elsa and Robert Johnson
Laura and Lawrence Jovino
Susan and William Karkheck
Joseph and Dana Kennedy
Angie Klingler
Kitty and Jim Koch *
Elaine Koury
Roy and Shirley Kring
Mark and Lisa Lafontaine
Margaret Loomis *
Kris and Tom Lucas
Deborah Luippold
Betsy and Greg MacDonald
Paul and Julie Mansour
CDR Jeffrey Martens USN
Mark and Allie Martens
David and Dorothy Maruska

Continued next page

NLRA 2019 ANNUAL REPORT

Continued from previous page

Donna and Kenneth Maxwell
Sharon and Denis McCann
James McGinness
Wendell and Barbara McIntire
John and Carole McKenna
Sandra McKenzie
Robin McLane
John and Linda McLean
Dale Medearis
Caroline and Peter Megan
Catherine Mihovan
Michael Mihovan
Elaine and Les Mills *
Richard and Virginia Miranda
Ed and Hilda Moody
Prisco and Dawn Morella *
Robert and Gena Moses
Melissa and John Mullen
Ermelinda and William Nassar
Jeff and Judy Neyhart
William and Suzanne Nieman
Robert and Rita Norander
Carl and Melissa Nordstrom
Jim, Kim, and Emily Nute
John O'Brien
Mark and Mary Ellen O'Connor
Barbara Pape
Christopher Pape
Hannah Patterson Aprea
Susan Peterson and Jim Collins
Brian and Barbara Picard
Robert Pinsonneault
Ari and Jessica Pollack
Brent and Wendy Powell *
William and Andrea Powers
Douglas and Judith Priestley *
Linda and Jerry Quin
Ray and Diane Raimo
William and Theresa Raymond
David and Enid Reed *
Michael and Karen Regan
Stu and Millie Rent
Keith and Cheri Richardson
Kerry and Carol Riley
Mike and Sarah Robertson
Nelson Rodrigues and Lisa Ronchetti *
Paul Romano
Frank and Felicia Rooney
Kimberlee and Jeffrey Rummler
Dr. Donald and Barbara Sherman
Bonnie Shope and David Byter
Susan Spaeth *
Samuel Stevens and Deborah Merrill
Wayne Stokes
Brett Stratton
Sandra and William Symonds
Pamela and Michael Thayer
Richard and Ellen Thompson
Bruce and Peggy Traumuller
Louis and Lorraine Travers *
Alice Tweedy *
Andrew Twombly

Diane Walberg
Peter and Donna Worthen
Brendan Yout
Timothy and Rama Ziegenhals

\$35-\$49

Jeanine Achin
Bruce Beurivage
Katherine Bemis
Roy Bergman
Diane Boller
Mary Brescia
Mary Broderick
Robert Bruni
Rain Burns
Catherine Callahan
Michael and Mara Capsalis
William and Eileen Carney
Jane Clarke
Richard Cooney *
Nancy Cummings
Ellen Edersheim
Jane Foster
Meredith Funston
Margaret and Bill Gasperoni
David and Andrea Goldthwaite
Erin Graichen
Rebecca Hanson and Michael Rossi
Andrea Hantz
Suzanne and Malcolm Heslop
Nadine Hession *
Claire Hilsinger
Chris Janis
Ira and Erica Krull *
Tonya Magnuson
Rachel Marden
Mary Mihovan
Tricia Mills
Patrick Moriarty
Lindsey Morse
John and Carol Phillips *
Elaina Putnam
Sharon Radimer Veldhuis
Cindy Regan
Michael and Karen Reynolds
and Jenn Sullivan
Paul and Claire Ricciardi
Allan Russ
Ralph and Joyce Safford
Margaret and Michael Sawicki
Ruth Smith
Eric Trussell
William and Lucille Weir *
Michael Whitney

\$1-\$34

Anna and Douglas Anderson
William and Janice Barrett
Doug Bauder
Alan and Marilyn Blakeley
James Broderick III
Robert Brodeur

A Special Thank You to Our Monthly Donors: Supporting Newfound Year-Round

In a watershed, every drop counts. Just as the rain sustains our watershed, refreshing our waterways and nourishing new growth, your monthly donation sustains and grows the projects and programs that conserve Newfound. By spreading your gift over the course of the year, you make a constant impact that translates into year-round work to protect the place you love. Thank you for your steady support.

Do you want a simple way to support a healthy Newfound? Becoming an automatic monthly donor is the easiest way to make a splash. No more need to track down stamps and no more renewal letters from NLRA! The only mail you'll get from us will be a heartfelt thank you. Your gift will also go further. When we know we can count on your monthly support, we can spend more time on the work that really matters.

Sign up today at newfoundlake.org and get back to doing what you really want—enjoying the beauty of Newfound your donation makes possible.

Jane Brown and Frank Simeone
Fred and Marilyn D'Amore
Helen Duchesne
Susan Finley *
Ariail Gores
Christine and Bruce Huntoon
Stanley Jackson, Jr.
Geraldine Jurisson
Daniel and Virginia Kenney
Karen and Robert Larrabee
Stephanie Lent
Walter J Levy
Jurgen Lias
Don and Sue Martin *
Judith Mayes
Bernadette McLaughlin
Anne and Mel Milender
Anne Giles Morgan
William and Mary O'Donnell
Charles and Jean Parillo
Patricia and Glenn Porter
Sculptured Rocks Farm
Dave and Maureen Serighelli *
Marybeth and John Tschetter
Martha Twombly and Mark Coulson
Audrey West
Tom and Jule Whelan

In Memory Of

Lee Alexander
Catherine Barrett
Robert G. Beane
Kenneth D. Burke
Janice Chase
Frank DiPietro
Dennis Dodge
Elizabeth Emerson
Roger Emerson
John Gemmill
Keith Harger
Stan "The Iceman" Jackson
Bettina Jenney
Nick Lawrence
Ernest Manning
Kevin H. Mooney
Jinga Moore
Kathy Radimer
Helen Robinson
Ann Shattuck Smith
John W Spaeth III
John Stokoe
Betsy Twombly
Robert Willson

Volunteers

In 1971, eleven dedicated community volunteers were brought together by a common goal: to protect the Newfound watershed. With their effort, the Newfound Lake Region Association was established, founded firmly in this passionate tradition of volunteerism.

Today, volunteers continue to be the backbone of the work that protects the watershed. Since its inception, NLRA has grown to incorporate and collaborate with broad networks of volunteers, as well as state-wide programs such as the University of New Hampshire Lay Lakes Monitoring Program. Our volunteers are often the

literal “boots on the ground”—tromping through streams to monitor water quality, collecting samples of potential invasive aquatic species, planting trees to restore shoreline habitat, and even stuffing envelopes to send out the letters that keep the Newfound community informed.

So what does it all add up to?

- 30 years of water quality data, allowing us to check important trends in water quality

- ZERO invasive aquatic species
- Grey Rocks/shoreline restoration
- Dozens of landowners working with our the Newfound Land Conservation Partnership to conserve land in the Newfound Watershed.

- Hundreds of members of the community educated on how a watershed works and what they can do to lessen or eliminate their impact.

- A continued spirit of engagement within the community

Be sure to look over our list of 2019 volunteers, and, if you appreciate the pristine beauty that surrounds us, tell them thank you when you see them. Then, email info@newfoundlake.org or visit newfoundlake.org/employment-volunteers to see how you, too, can protect what you love.



Volunteers are at the heart of all NLRA accomplishes, whether it's helping to restore the shoreline with native plants at Grey Rocks, monitoring water quality, or helping with the membership mailing.

NLRA volunteers are all ages and come with a diversity of experience. We work with Newfound summer camps, locals schools, and Plymouth State University, in addition to folks within the Newfound community.



2019 Volunteers

Paul Bemis
Jenn Berry
Tom Berry
Dick Beyer
Camille Bharucha
Kathy Bird
Karen Boyd
Joe Boyer
Rain Burns
Mario Capozzoli
Ellie Chalmers
Jan and Ron Collins
Paula Cummings
Herb D'Arcy
Rosemary D'Arcy
James A. Fitts
Coleen French
Parker Griffin
Steve Gunn
Holderness School students
Roger Lafontaine
Andrea LaMoreaux
Donna Luti
Bob Martens
Doug McLane
Stephen McMahan
Ed McNierney
Elaine Mills
Les Mills
Rob Moore
Claire Moorehead
Doug Moorehead
Alice Mullen
Kevin Mullen
Neci Petersen
Robert Pinsonneault
Cathy Pippard
Val Scarborough
Kim Smith
Suzanne Smith
Lee Ann Taylor
Martha Twombly
Rick Van De Poll
Gina Wagner
Greg Wagner
Ken Weidman
Paul Winalski



THE MONITOR

Non-Profit
Organization
US Postage
PAID
Concord, NH
Permit No. 192

Newfound Lake Region Association

10 N. Main St. Unit 1

Bristol, New Hampshire 03222

Telephone: 603-744-8689

info@newfoundlake.org

newfoundlake.org



2020 CALENDAR

Visit the NLRA events page, newfoundlake.org/events, to learn more and to register.

As of printing, all events are scheduled to run as planned. Connect with us at NLRA to confirm.

Public is warmly welcome. All events are free unless posted otherwise.

- | | |
|------------------------|---|
| June 26, 4–6 pm: | Annual Meeting and Gathering, Red Barn, Hebron |
| July 7, 9–12 pm: | Guided Paddle with Rick Van de Poll, Grey Rocks, Hebron |
| July 10, 10:45 am: | Nature Storytime, Minot-Sleeper Library, Bristol |
| July 18, 1:00 pm: | Around the Lake Sailing Race, Grey Rocks, Hebron |
| July 25, 9 am–3 pm: | Hebron Fair, Hebron Center |
| August 8, 9 am–3 pm: | Alexandria Church Fair, Alexandria |
| August 15, 9 am–12 pm: | Celebrate Newfound Lake, Grey Rocks, Hebron |
| August 20, 7:30 pm: | Stargazing with the NH Astronomical Society, Red Barn, Hebron |
| August 25, 1–4 pm: | Mushroom Forage with Rick Van de Poll, Grey Rocks, Hebron |

Visit newfoundlake.org to stay current with all we are doing for your watershed.